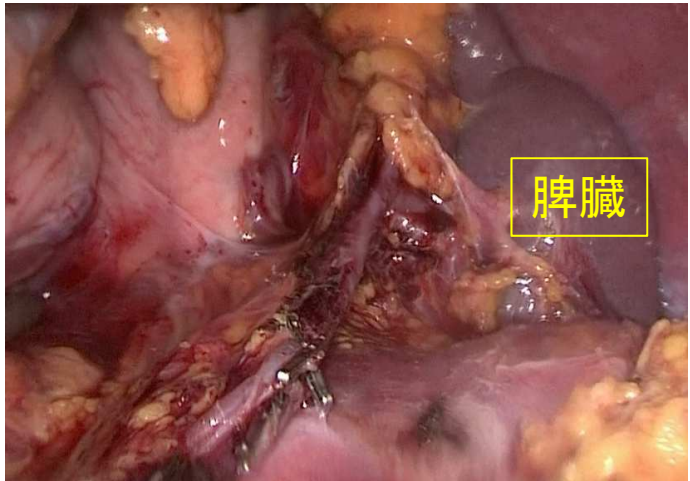
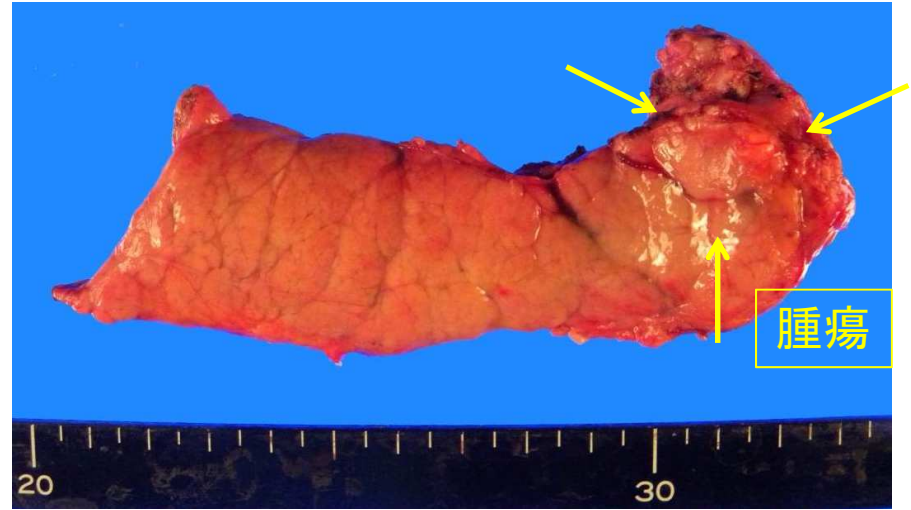
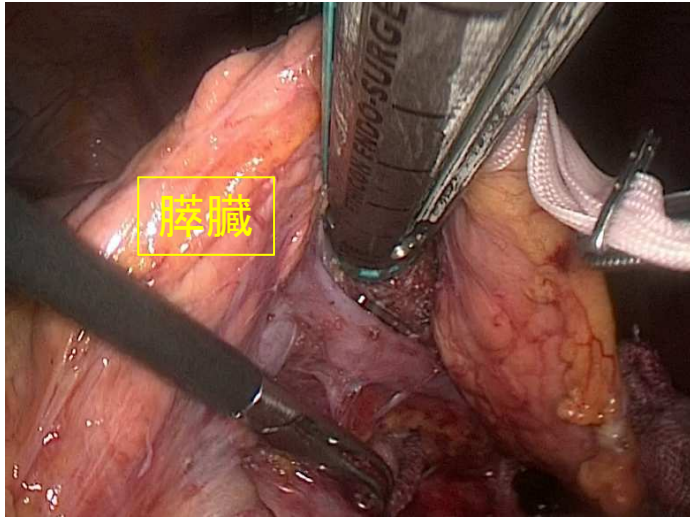


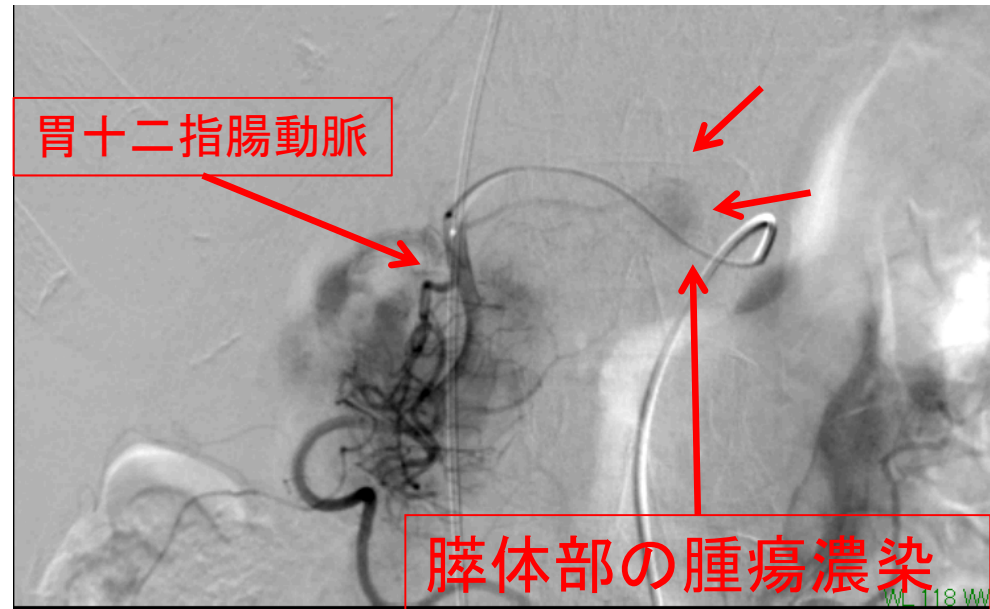
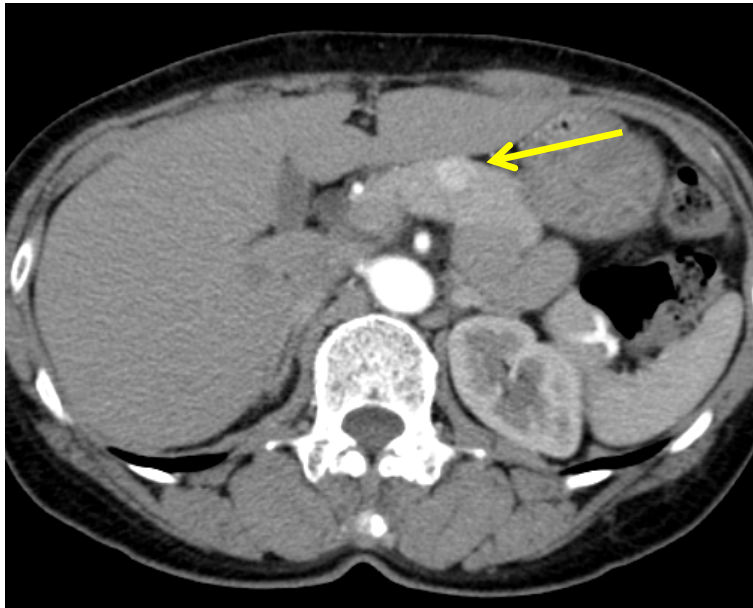
# 表1.日本肝胆膵外科高難度手術

術式	症例数
(拡大)肝右葉切除	10
(拡大)肝左葉切除	11
肝中央二区域切除	1
肝区域切除(外側区域を除く)	15
肝垂区域切除(S4を除く)	20
小計	57
DP	6
PD	29
TP	2
胆管切除+肝切	1
小計	38
合計	95

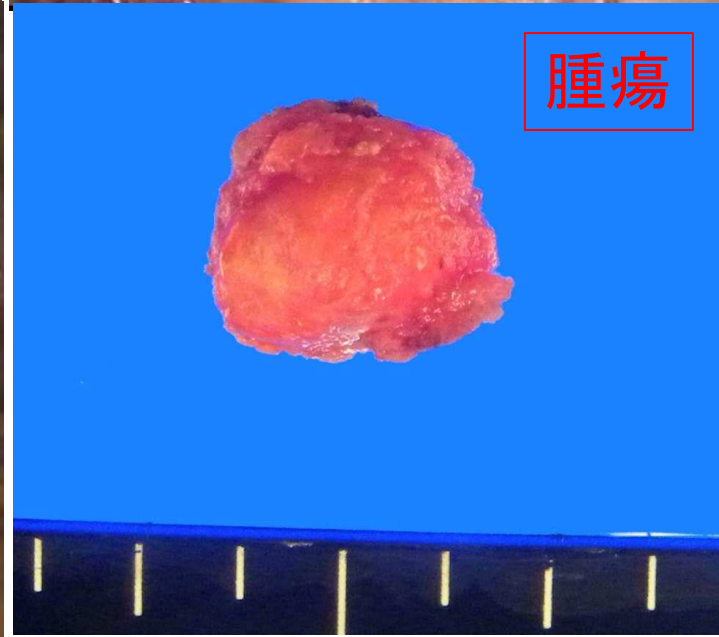
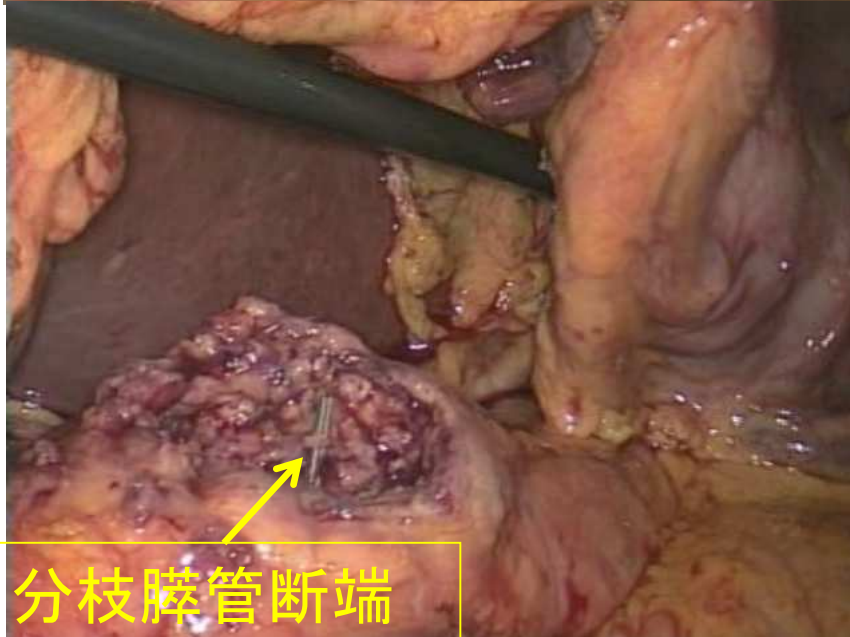
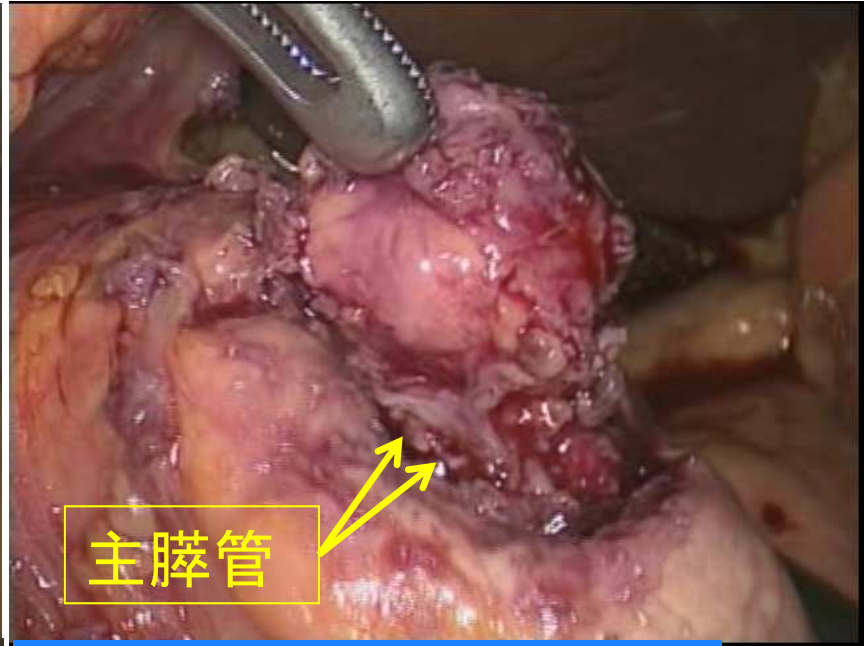
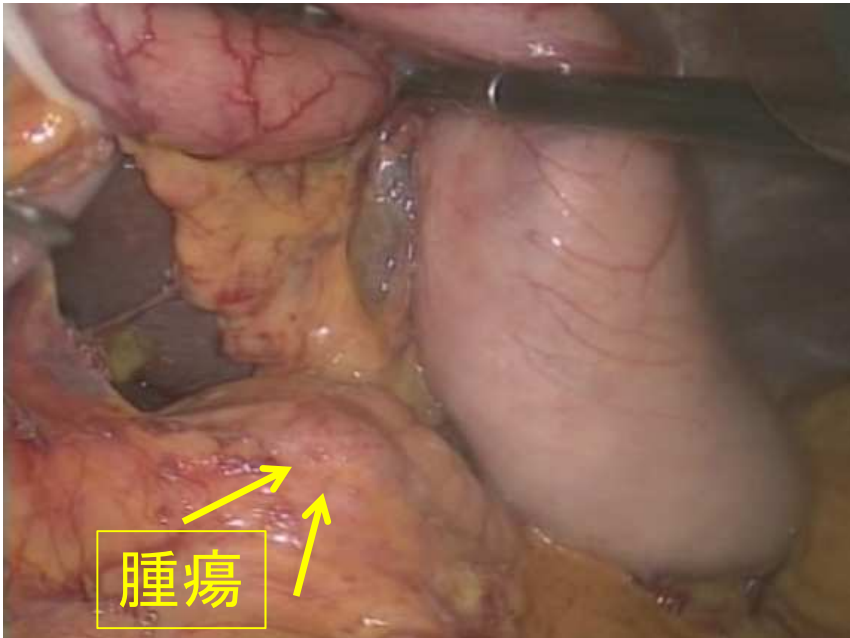
\* 2013.4.1-2014.3.31



完全鏡視下尾側切除術 (LAP-DP)



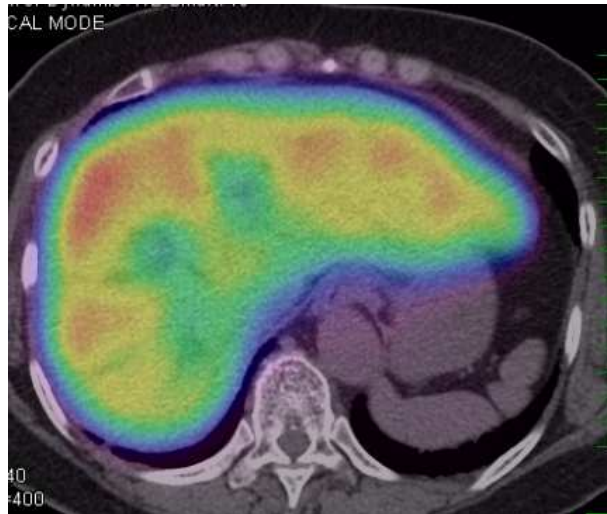
良性腫瘍に対する完全腹腔鏡下核出術



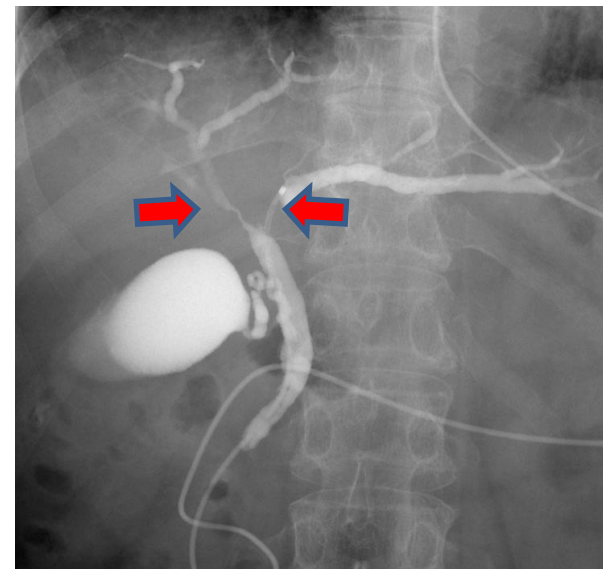
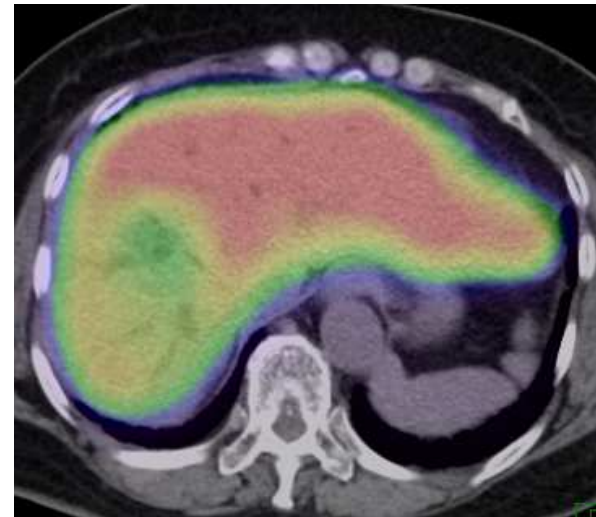
良性腫瘍に対する完全腹腔鏡下核出術

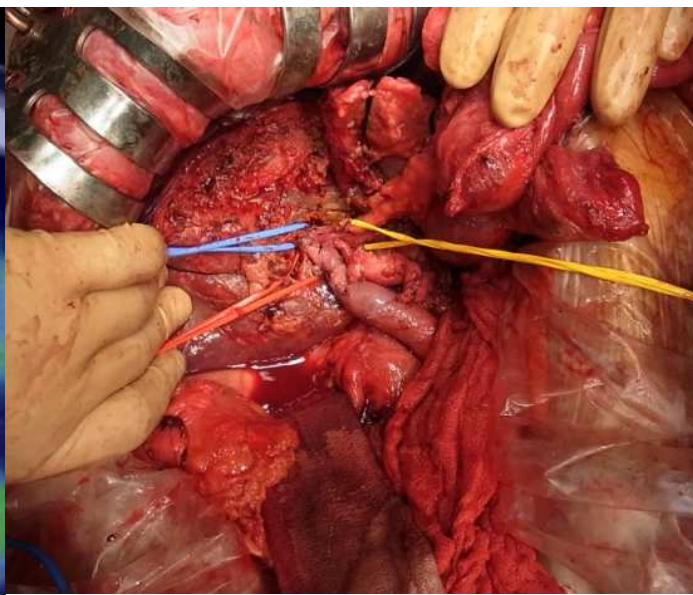
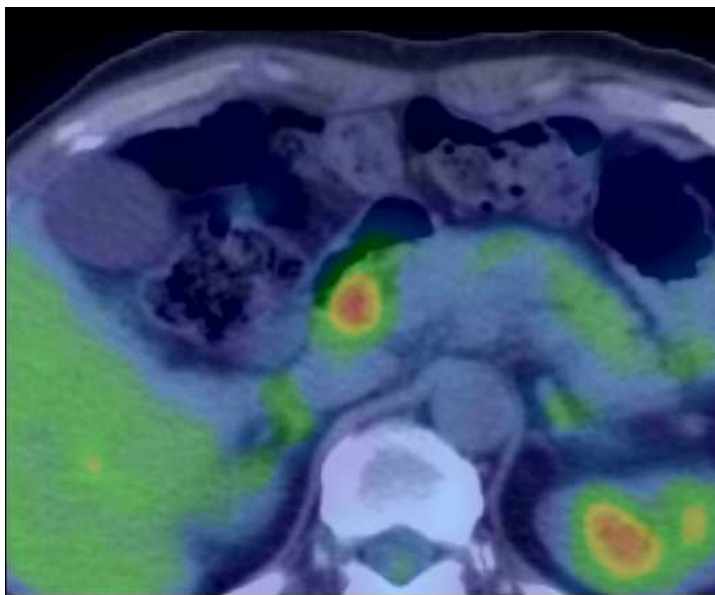
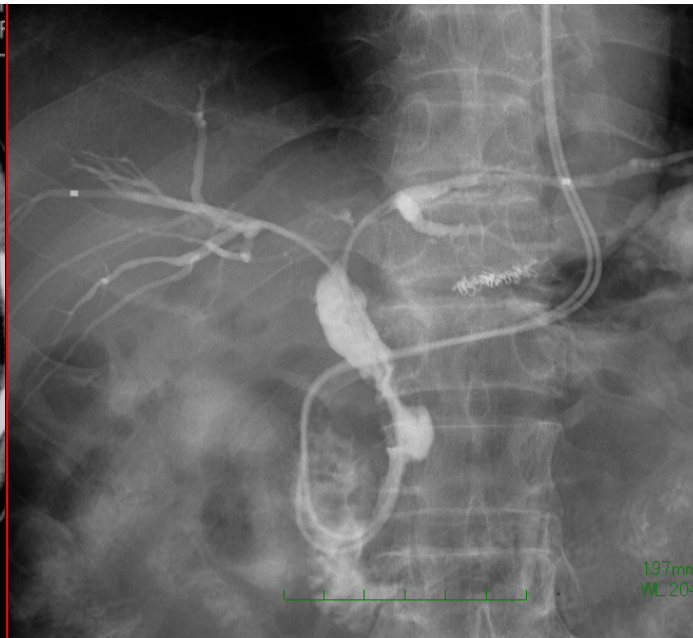
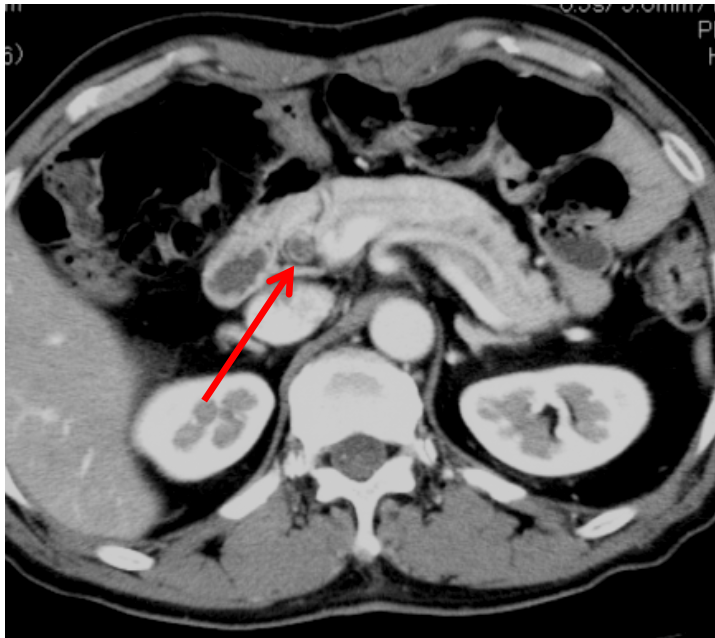
# PVEにて右門脈塞栓後に右肝切除を行った肝門部胆管癌症例

PVE前



PVE後





広範囲胆管癌に対する左肝切除術＋亜全胃温存膵頭十二指腸切除術